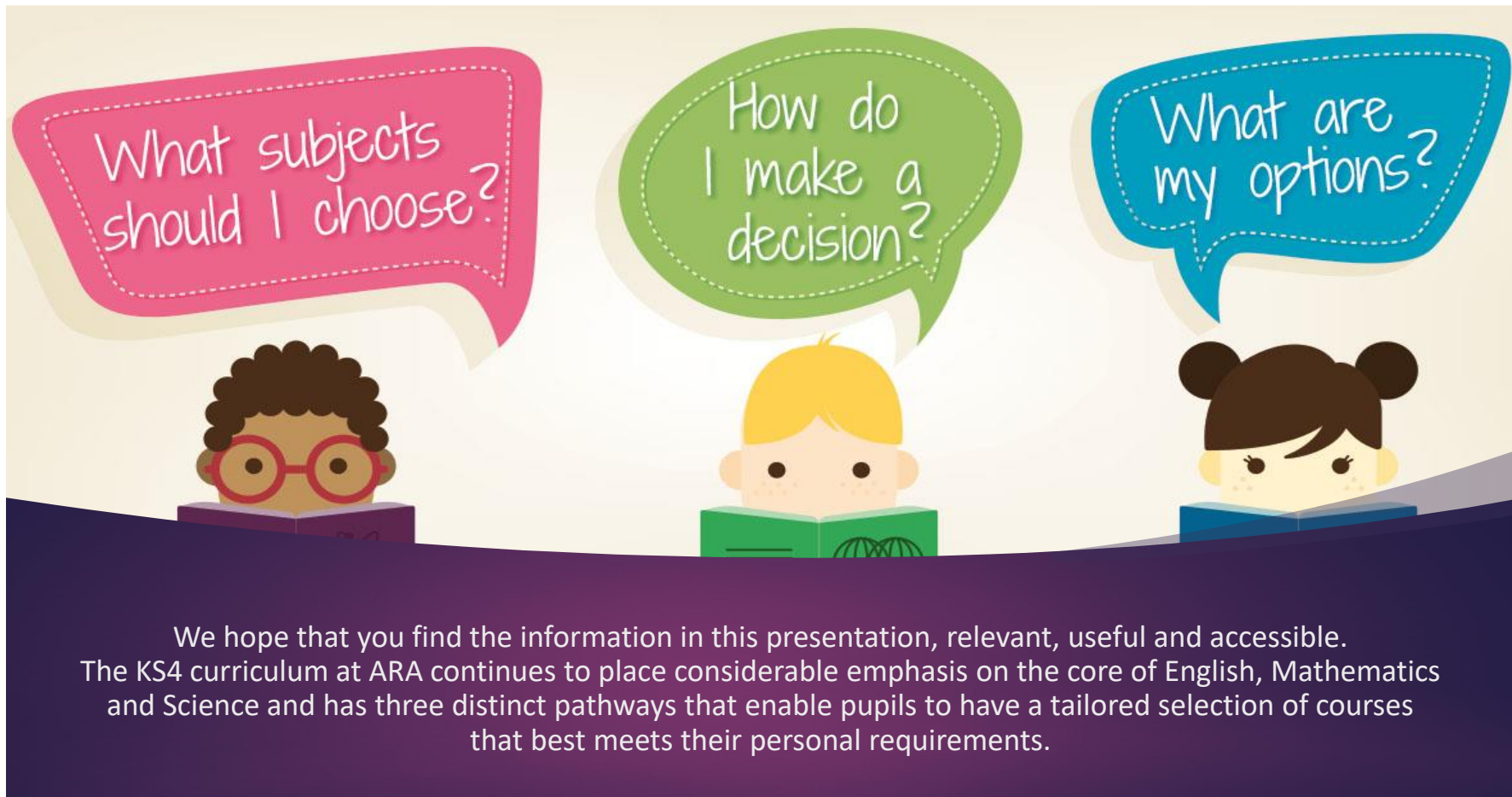


Y 8

Options

Evening

Copies of this presentation, the presentations from each subject area and the Options Booklet will be available on the school website.



We hope that you find the information in this presentation, relevant, useful and accessible. The KS4 curriculum at ARA continues to place considerable emphasis on the core of English, Mathematics and Science and has three distinct pathways that enable pupils to have a tailored selection of courses that best meets their personal requirements.

What will every child study?

- ↴ English Language (GCSE)
- ↴ English Literature (GCSE)
- ↴ Mathematics (GCSE)
- ↴ Science (Double award GCSE)
- ↴ Core Physical Education (non-examined)
- ↴ Personal, Social Health Education (non-examined)



What will your child study?

One of three pathways

RUBY

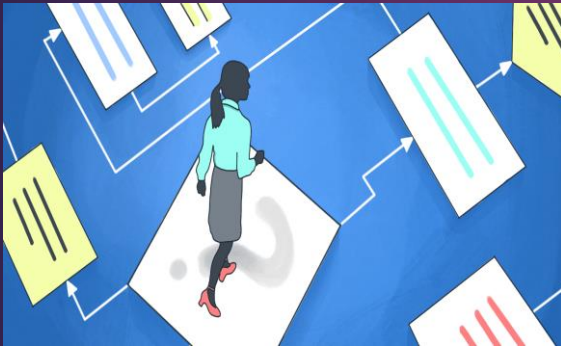
SAPPHIRE

EMERALD



The Option Pathways have been designed to be interesting, stimulating and exciting. Providing a broad and balanced curriculum that offers each individual a route to academic success and employment.

How do I decide?



- ↓ Gather as much information as possible and carefully consider the views of your teachers and parents/carers.
- ↓ Choose a combination of subjects that provides a balanced pathway taking into consideration personal interests and abilities.
- ↓ Pick subjects which you enjoy.
- ↓ If you have clear aspirations for your future studies and career, choose subjects that support these goals.

English Baccalaureate

Achieving the English Baccalaureate (Ebacc) gives access to a full range of employment options when they leave school. If they are thinking of going to university, the EBacc is recommended by Britain's most prestigious universities.



The Russell Group has named languages as subjects that open doors to more degrees at universities. (The Russell Group is a group of 24 universities with a shared focus on research and a reputation for academic achievement)

The Pathways

Ruby



Sapphire



Emerald



The pathway students are placed on has been determined in consultation with subject teachers and considers their prior attainment and progress since Year 7. Following the designated pathway provided the best route for academic success for each individual pupil. They are all of equal value for the child which is why they are named after precious stones. We do not advise changing pathways, there will however, be a window of opportunity to change open option choices, within a pathways, during the summer term.

Ruby Pathway

The **Ruby** pathway follows the English Baccalaureate (Ebacc) and provides a broad academic route that is a good grounding for the study of a wide range of subjects at university.

Pupils will follow the **common core alongside** a language (**Spanish or French**) **and** either **History or Geography**.

They will then have **two 'open' options**.



GCEs followed
English language
English literature
Maths
Double Science
Spanish or French
History or Geography
First open option
Second open option

Sapphire Pathway

The **Sapphire** pathway is designed to maintain breadth and balance whilst allowing increased flexibility. It can still provide a pathway to A levels and university and a wide variety of specialist courses at Post 16.

Pupils will follow the **common core** alongside one of the following subjects: **Spanish, French, Computer Science, History or Geography.**

They will then have **three further 'open' options.**



GCEs followed
English language
English literature
Maths
Double Science

Spanish or French or History or Geography

First open option

Second open option

Third open option

Emerald Pathway

The **Emerald** pathway provides a more tailored route for pupils that may find nine academic subjects challenging. Whilst still enabling them to excel in school.

Pupils will follow the **common core** alongside either **History or Geography**.

They will then have **two further 'open' options**.

They will also receive specialist teaching to support the development of core skills in literacy, numeracy, life skills and employability.



- GCEs followed
- English language
- English literature
- Maths
- Double Science
- History or Geography**
- First open option**
- Second open option**

Open Options

GCSEs

Art & Design
Art Graphics
Art Textiles
Business
Computer Science
French
Geography
History
Music
Photography
Product Design
Religious Studies
Triple Science
Spanish



Vocational Courses

Digital Information Technology
Enterprise & Marketing
Health & Social Care
Performing Arts (Drama)
Sport
Travel & Tourism



It is not possible for every child to get their top choices, some of the courses offered may not run if we do not have sufficient pupil numbers to make them viable, other subjects may be oversubscribed.

Next Steps

- ▶ An electronic form will be distributed to collect preferred option choices, it is very important that you follow the instructions on the application form and rank the order of preference before returning the form prior to the deadline.
- ▶ Once all the option forms have been collated, we will work out the option bands; we do it in this order so that we can maximise the number of pupils who get the options they want.



Closing Date

The closing date for completion of the form is **Friday 26th February**

(Up until this date, you will be able to make amendments).

It is in your interest to ensure that you meet the deadline, so that your child has the best chance of having all their options met.

The Option Forms will then be processed for timetabling purposes. Unfortunately, any subjects which are under-subscribed may have to be withdrawn from the timetable. You will then receive a confirmation letter of the choices made.

If you have any concerns about the on-line options process, please contact a member the Head of Year, SafeWorker or a member of the Leadership Team or email enquiries@alecreedacademy.co.uk



A calendar for February 2021. The days of the week are listed in the header: M, T, W, T, F, S, S. The dates 1 through 28 are listed in the rows. The date 26 is circled in blue. The dates 6, 7, 13, 14, 20, and 21 are highlighted in yellow.

February 2021						
M	T	W	T	F	S	S
1	2	3	4	5	6	7
8	9	10	11	12	13	14
15	16	17	18	19	20	21
22	23	24	25	26	27	28

Friday 26th Feb 2021